



**StreetFighter COMMODORE
800/1000HP FUEL MODULE**



S T R E E T F I G H T E R A U S T R A L I A
W W W . S T R E E T F I G H T E R . N E T

StreetFighter COMMODORE 800/1000 HP FUEL MODULE

Important! Must Read First

Congratulations on the purchase of the StreetFighter In-Tank Fuel system for your 2006-onwards Holden / HSV V8 Commodore.

To ensure your Fuel Module system is fitted correctly and operates perfectly and reliably we advise that this kit is to be fitted by a StreetFighter Dealer workshop.

If you are unable to access a StreetFighter dealer we strongly recommend a professional experienced fully qualified technician to install your new StreetFighter 1500hp Fuel Module system.

Ask your qualified installer to contact KPM Motorsport on any aspect not clear in the instructions provided.

Phone: 08 8299 9998

Email: support@kpmmotorsport.com.au

As a wide variety of skills, procedures, special tools and workshop equipment is needed to install this kit:

As a wide variety of skills, procedures, special tools and workshop equipment is needed to install this kit:

- KPM will take NO responsibility or give NO guarantees on the operation of this product for fitment not carried out by a StreetFighter dealer or experienced qualified technician.
- KPM Motorsport will take NO responsibility or give NO guarantees on the operation of this product due to not fitting this kit exactly as per the instructions provided.

Ensure correct workshop safety procedures are carried out in fitment of this kit.

Please read ALL instructions before commencing fitment.

Guarantee

On satisfaction that ALL instructions have been followed as per this document KPM Motorsport will warrant the StreetFighter Fuel Module system against any defects or faults for 12 months from the date of purchase



Important

This Fuel Module is engineered to operate perfectly as a complete system when used with all components and correct fuels as follows.

- 1) StreetFighter Fuel Module (for increased flow and capacity)
- 2) Early Model Commodore Retrofit Kit (2006-2009 models only).
 - KPM Motorsport will take NO responsibility for the operation of this fuel system if any of the components listed are not utilised with this package.
 - KPM Motorsport will take NO responsibility for the operation of this fuel system if any of the components listed are replaced with a non-KPM approved component.
 - KPM will take NO responsibility for the operation of this fuel system if using the StreetFighter fuel module on a vehicle NOT designed and/or NOT fully retrofitted for E85 Ethanol or flex fuel.

Note:

E85 Ethanol is highly corrosive on many components.

Please be aware that if your car is NOT built for E85 Ethanol from manufacturer, the remaining components in your fuel system will also need to be replaced or suited for E85 Ethanol. (Examples of some possible non-compatible components - are fuel injectors, fuel filters, fuel lines, rubber hoses, fittings etc.)



Before Dismantling

- You will need to reduce residual fuel pressure in the fuel system to 0 kpa to enable disconnection of fuel lines and rail.
- You can do this by removing the fuel pump fuse and running the engine until fuel pressure drops to 0 kpa.
- Disconnect the battery

Standard Fuel Module Removal

- 1) Drain Fuel tank
- 2) VE-VF model Commodores all require the vehicles fuel tank to be removed to access the intank fuel module. You will need to remove the fuel tank from your vehicle as per the manufacturer's instructions.
- 3) Remove the fuel lines from the fuel module (a quick disconnect tool is recommended for disconnecting fuel lines, take extra care in not crimping/ damaging the fuel line on removal). FIGURE 1
- 4) Remove the electrical connector from the module. FIGURE 1
- 5) Unscrew the retaining ring holding the module to the tank with the correct tool. FIGURE 2
- 6) Lift the module from the tank until you can access and remove the crossover pipe connector at the base of the canister. FIGURE 3
- 7) Carefully lift the module completely from the fuel tank.

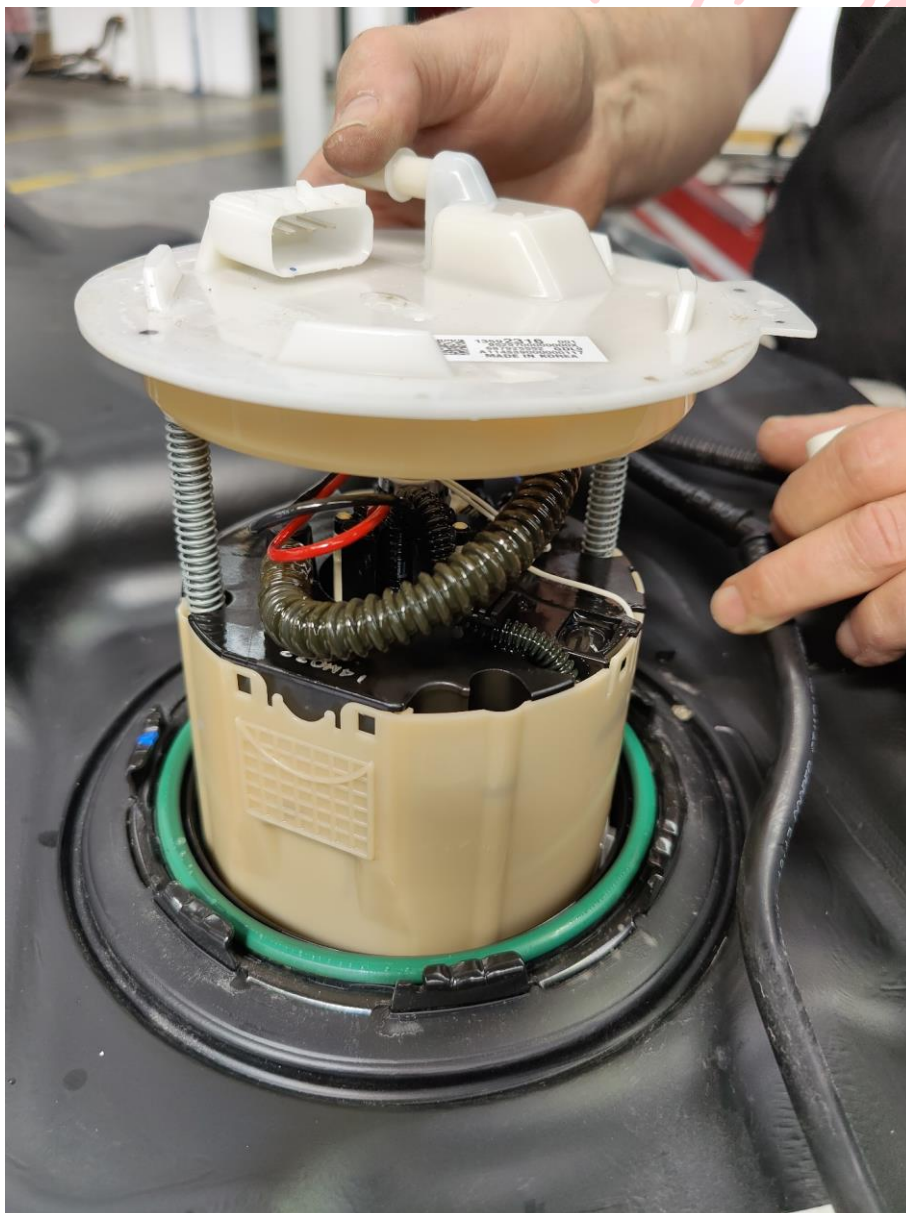
FIGURE 1



FIGURE 2



FIGURE3





StreetFighter Module Fitment

If your vehicle is a 2006-2009 early model Commodore, you will need to fit the Retrofit Kit supplied as per the supplementary instructions provided.

If your vehicle is a 2010 onwards Commodore, you will need to remove the fuel sender unit from the standard fuel module for fitment to the upgraded StreetFighter Module.

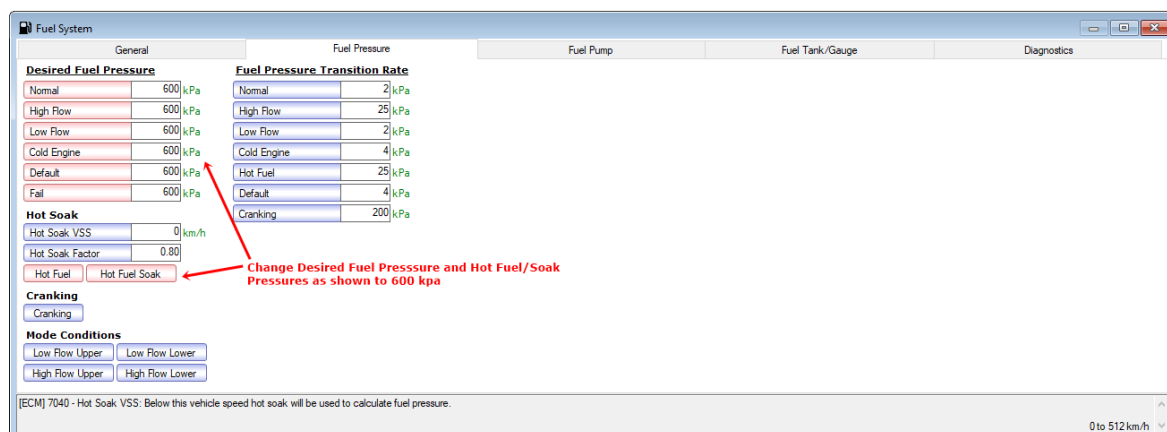
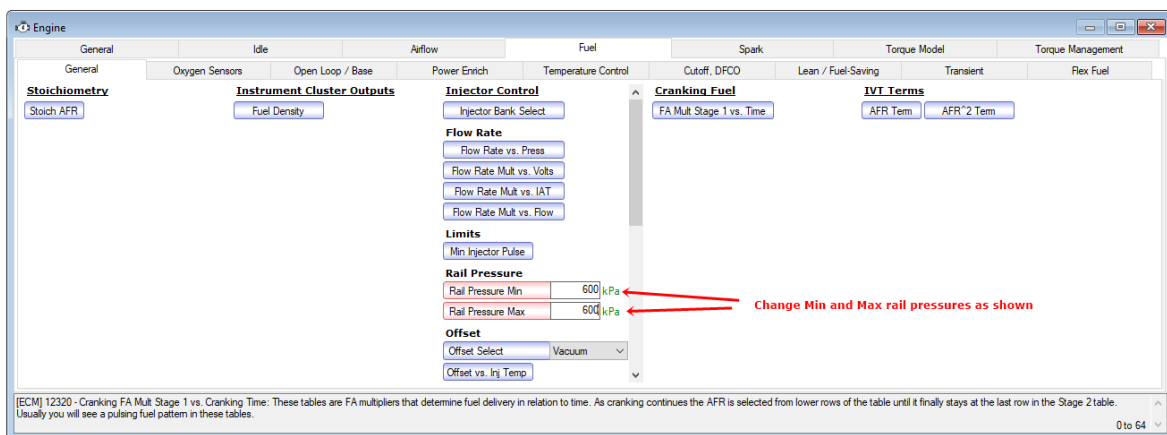
- 1) Carefully lower the new fuel module into the tank taking care not to damage the fuel sender and float mechanism while doing so.
- 2) Ensure that you can access the cross over pipe connector in the fuel tank with plenty of room to reconnect to the base of the canister.
- 3) Ensure the crossover pipe connector clicks fully onto the fuel pump module canister.
- 4) Retension the retaining ring to secure the fuel module into the tank with the correct tool. (Ensure module is sitting square and flush on the seal prior to retensioning).
- 5) Refit fuel lines ensuring they have clicked on properly. (Take extra care in not crimping/damaging the fuel line on removal or replacement.)
- 6) Proceed to refit the remainder of your fuel tank as per manufacturer's instructions

Street Fighter

System Software Re-Calibration

2006-2009 VE Commodore models

For early 2006-2009 VE model Commodores you will need to have a tuning professional adjust the following tables in your software to run the system correctly.



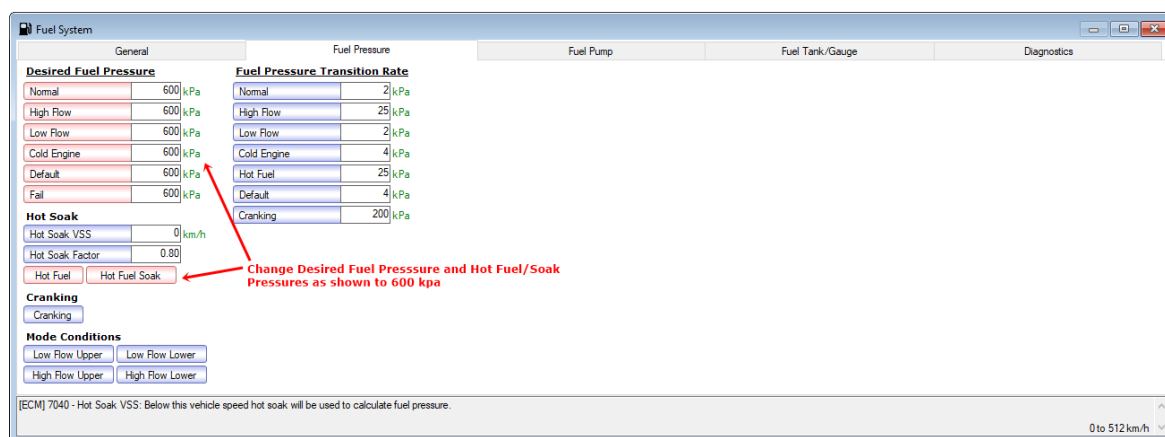
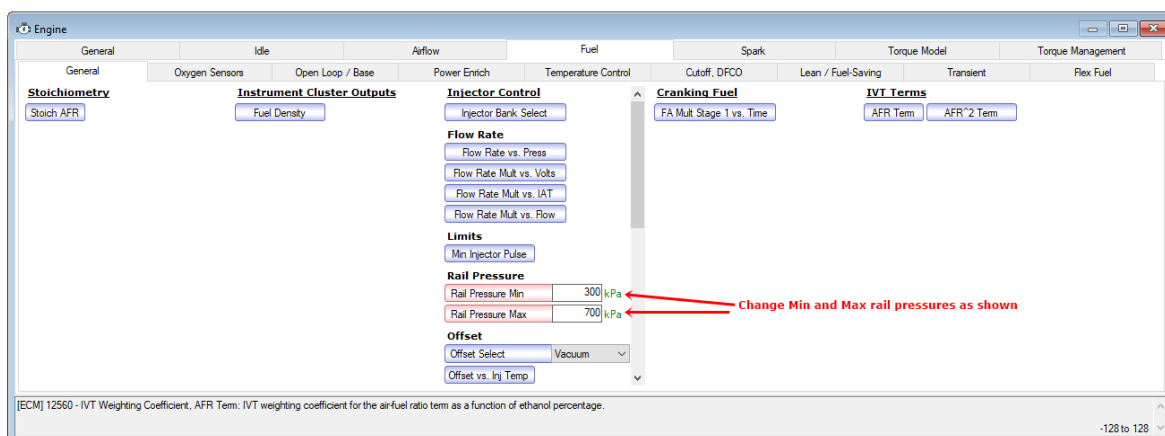


System Software Re-Calibration (cont'd)

2010-2017 VE-VF Commodore models

For late model 2010 onwards VE and VF Commodores you will need to have a tuning professional check and adjust the following tables in your Engine software to run the system correctly.

Note - Late model Commodore systems run a pulse width modulator (PWM) control module to run the fuel pumps



Start-up Procedure

- 1) Refit the fuel pump fuse.
- 2) Reconnect your battery.
- 3) Ensure you have at least 1/2 tank of correct clean/fresh fuel.
- 4) Connect a fuel pressure gauge to the supply line at the fuel rail
- 5) Prime fuel system and start engine.
- 6) Check all fittings at pump and fuel rail for NO leaks.
- 7) Check pressures are within specifications below.

If not within the specifications below you will need to check for correct fitment and take the normal course of diagnosis to rectify before proceeding.

Fuel Pressure engine idling 575-600 Kpa

- 8) Stop engine and relieve fuel pressure.
- 9) Remove fuel pressure gauge and refit fuel line.
- 10) Re-start engine and check for NO leaks.

IMPORTANT INFORMATION

As we test every module before it is shipped we have operating pressures recorded for each specific part number

Part number	Idle Pressure (max pressure)	Full Load Pressure (min pressure)
SFCOM800	600 kpa	350 kpa
SFCOM1000	600 kpa	350 kpa
SFCOM1500	570 kpa	350 kpa

As these pressures are the base operating pressure in the testing station they can be used directly into the vehicles calibration.

However as we have found minor variances from vehicle to vehicle it is recommended to manually check pressures on vehicle when able to do so preferably at the fuel rail and use observed pressure to populate tables in the calibration. Which should be the same or extremely close to testing pressure.

Please note: SFCOM800 / SFCOM1000 / SFCOM1500 Fuel modules.

All of the 3 modules listed have been manufactured and designed to run at the listed pressures at idle and light cruise. They have also been designed to decrease the fuel pressure while applying engine load for increased fuel demand. This is how the system is designed to perform and is absolutely what you will expect to see while logging fuel pressures on road or dyno.

All 3 modules are designed to perfectly supply fuel down to a minimum pressure of 350 kpa at full demand for its power rating.

KPM strongly recommends that you have your engine tune checked by a professional tuning workshop!

Depending on the previous fuel system your vehicle has been tuned to, your car may run differently with the new StreetFighter fuel system pressure and extra supply.

This can cause rich or lean fuel mixtures and possibly be detrimental to your engine!

It is your responsibility to have your vehicle checked and/or re-tuned by specialist methods to ensure correct fueling and engine safety and reliability.

**Please check out this
video regarding
StreetFighter Fuel
Module**



<http://youtu.be/rxnpBrjE-S4>

2006-2009 VE Commodore Fuel Module Retrofit Kit instructions

The 2006 -2009 Commodore ran a different fuel module to the later 2010-2017 VE-VF Commodore models.

KPM Motorsport therefore supply a supplementary Retro-fit kit with all our StreetFighter Fuel modules to enable a straight forward and easy fitment to early model 2006- 2009 Commodores.

This kit consists of:

- 1 x electrical connector and wires
- 1 x cross over pipe adaptor
- 1 x supply line hose and adaptor
- 1 x fuel sender assembly

Retrofit Kit Fitting Instructions

- 1) Unplug your standard wiring connector from your standard fuel module
- 2) Cut the wiring connector off the standard loom approx. 20mm down from the connector.
- 3) Noting the wiring diagram colours, solder the new electrical connector and wires in place of the old wiring and connector as per diagram. FIGURE 4
- 4) Be sure to use suitable shrink tubing on each wire to prevent any shorting of wires.
- 5) Gently push on the cross over pipe adaptor to the outlet at the bottom of the StreetFighter Module until it “clicks” on firmly.
- 6) Gently push on the supply line hose and adaptor to the top outlet of the StreetFighter Module until it “clicks” on firmly.
- 7) Position the fuel sender assembly down into the module as pictured. Allow it to slide down until it reaches the locating tabs. Gently push further and it will click into its final position. FIGURE 5
- 8) Insert the Sender Assembly electrical connector to the main Fuel Module body. FIGURE 6-7

Your Retrofit kit is now fitted.

Please continue to follow the main instructions to continue with your StreetFighter Fuel module fitment.

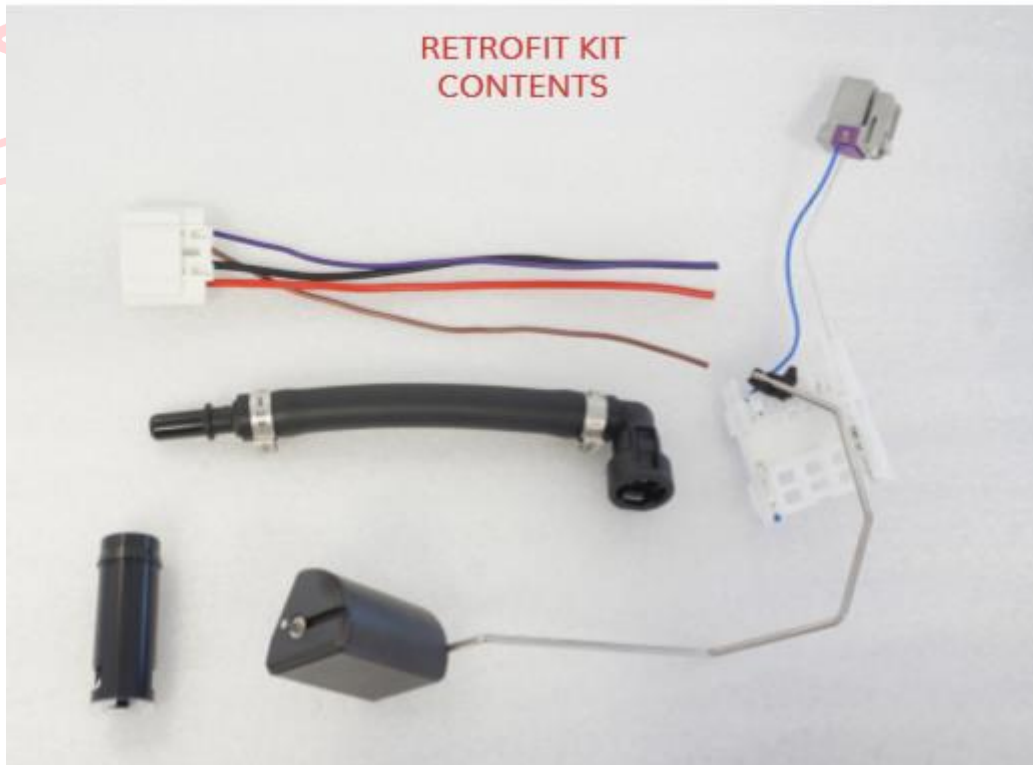


FIGURE 4

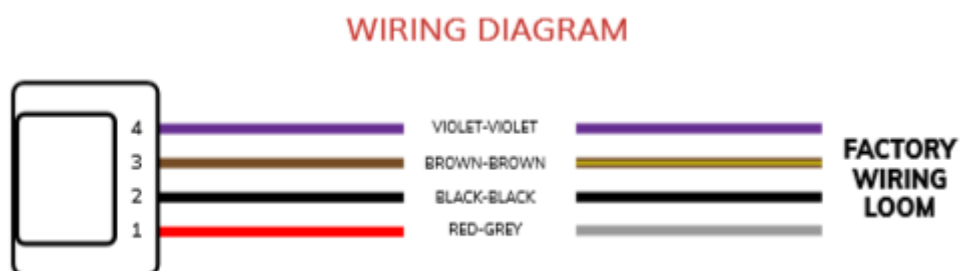
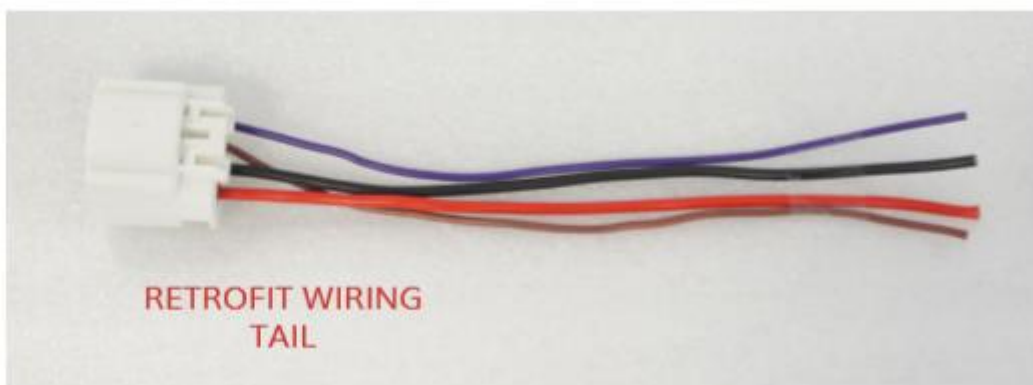


FIGURE 5

Streetfighter

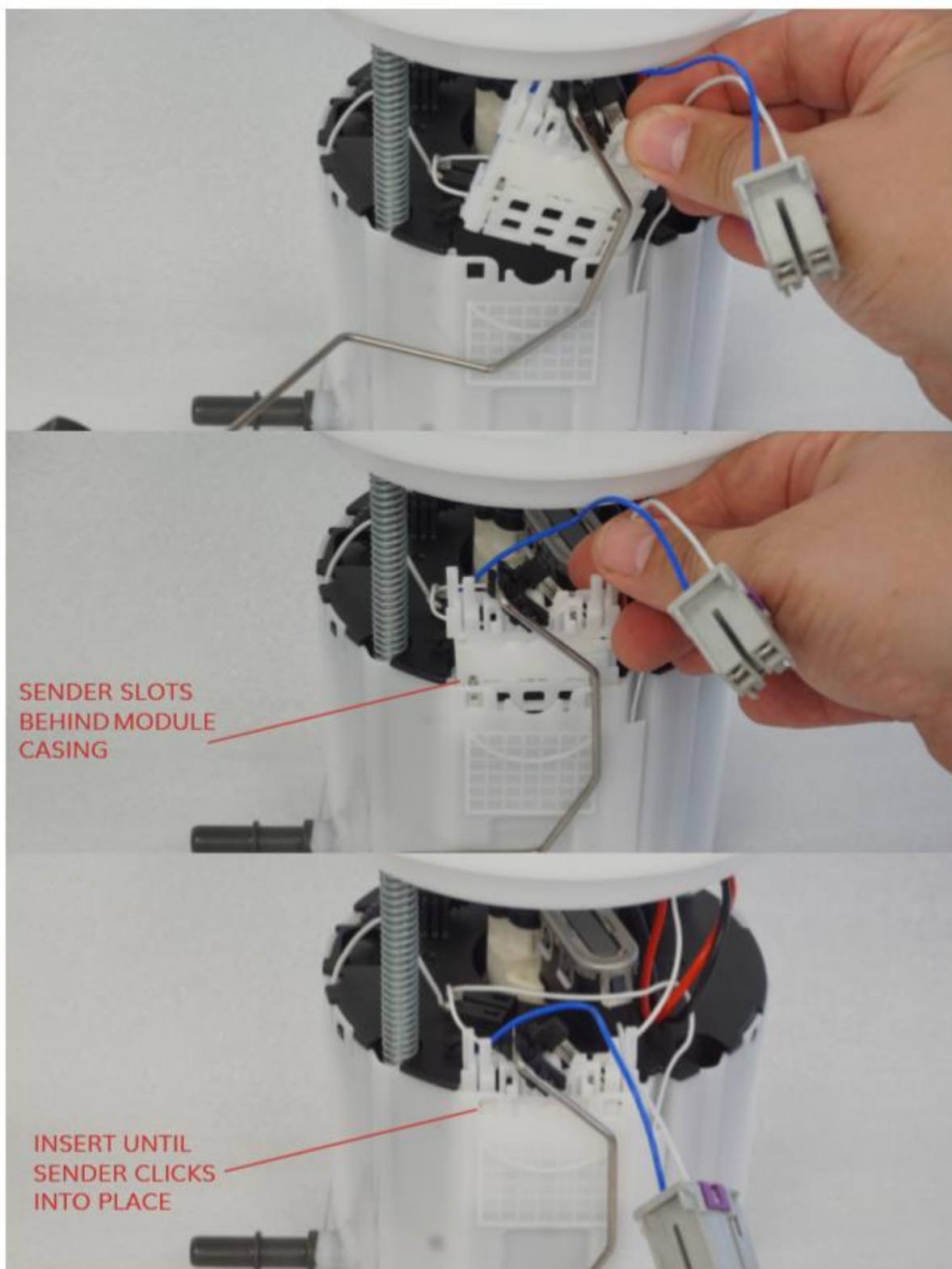


FIGURE 6

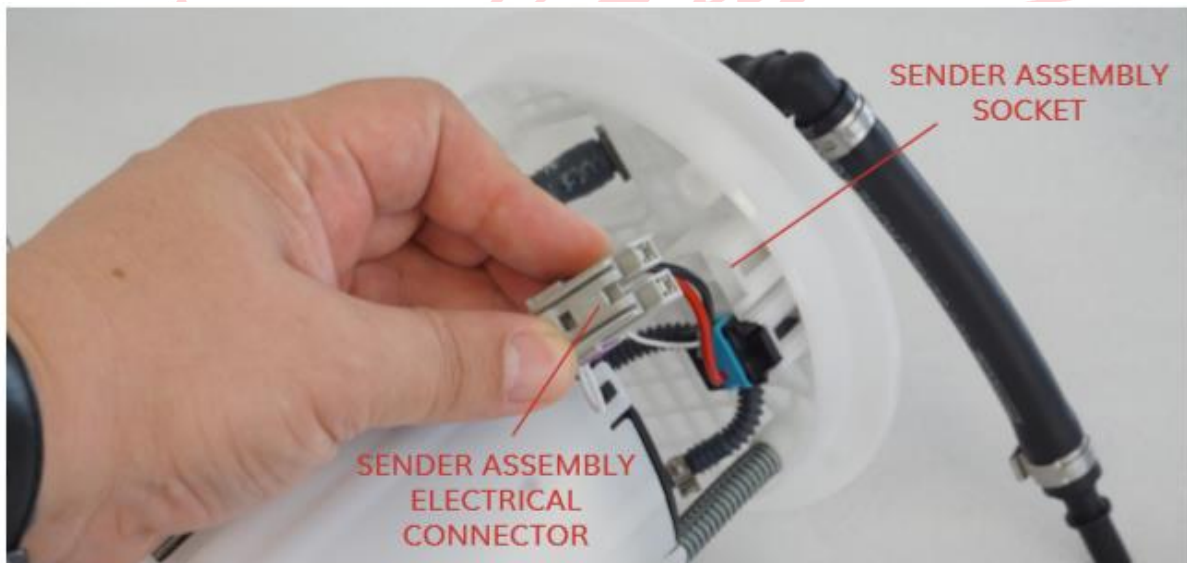


FIGURE 7

