



Mustang 2018 on S550 and S650 Calibration notes for the KPM1000HP fuel module.

There may be some instances where the KPM1000HP fuel pump module will need some adjustments made to the vehicles calibration to achieve its maximum flow.

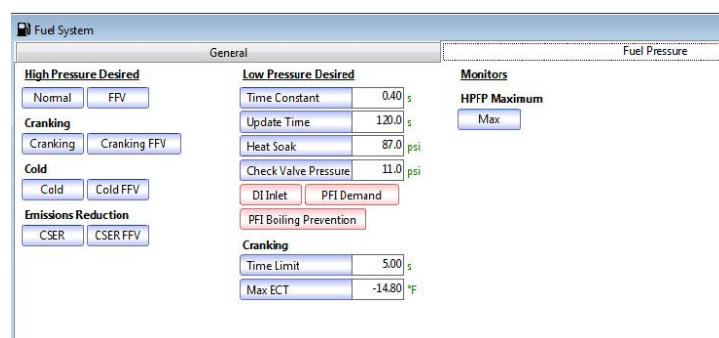
For the 2018 and up Mustang GT and Darkhorse there are voltage limits of what the FPDM will allow to the fuel pump. By raising this to an acceptable alternator output voltage the KPM1000 fuel module will supply more fuel when required.

All of our KPM Fuel Systems fuel pump modules are rated at 13.5v and 51psi.

The following instructions are where to make the calibration changes.

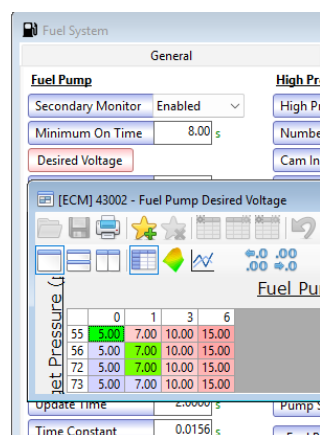
HP Tuners

13295 – 13289 – 13287 Are our pressure set points. Set these to 67 PSI / 460 KPA.



43002 is a Max Voltage vs Flow vs Pressure table. Set the table as shown.

*This table CAN be adjusted to finely tune duty cycle control based on vehicle modification but not necessary.





43003 Fuel Pump Max Voltage. Raise this to 15V.

The screenshot shows a software window titled "Fuel System" with a "General" tab selected. Under the "Fuel Pump" section, the following settings are visible:

Fuel Pump	
Secondary Monitor	Enabled
Minimum On Time	8.00 s
Desired Voltage	
Min Voltage	5.00 V
Max Voltage	15.00 V

Below the Fuel Pump section, the "Duty Cycle" section is partially visible.