



8-10-ADD

Upgrading from KPM800 to KPM1000

If you have purchased an 8-10-ADD on kit then these instructions will guide you through upgrading your KPM800 fuel pump module to our KPM1000 fuel pump module using many of your existing components.

Important! Must Read First

As with all KPM Fuel Systems products we highly recommend they be fitted by a professional and fully qualified technician.

If any aspect is unclear in the instructions to the installer, please contact KPM Fuel Systems at enquiries@kpmfuelsystems.com

- KPM will take NO responsibility or give NO guarantees on the operation of this product due to not fitting this kit exactly as per the instructions provided.
- Ensure correct workshop safety procedures are carried out in fitment of this kit.
- Please read **ALL** instructions before commencing fitment

Guarantee

On satisfaction that **ALL** instructions have been followed as per this document KPM will warrant this KPM Fuel System against any defects or faults for 12 months from the date of purchase.

Kit contents

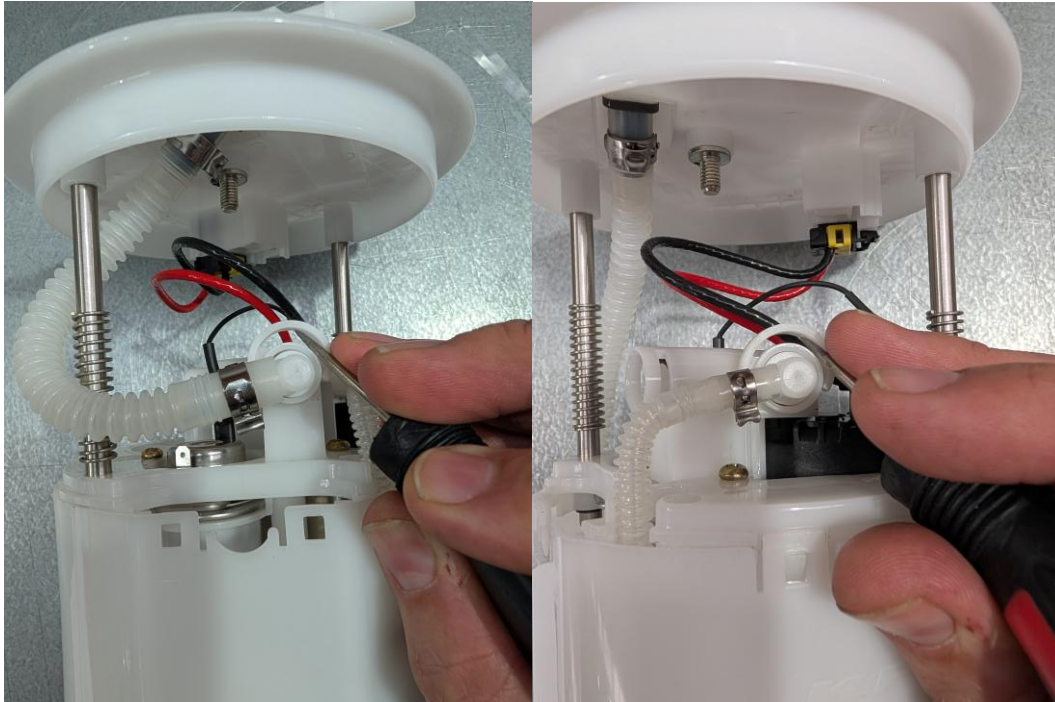


1. Fuel pumps
2. Fuel pump to manifold o rings
3. Fuel pump and filter base
4. Fuel filters
5. Manifold outlet o rings and retaining clips
6. Fuel pump wiring harness (not shown) will vary depending on vehicle model.

Disassembly

Step 1

Using a pick or small flat head screwdriver or similar remove retaining clips from fuel pressure feed outlet and venturi feed outlet.



Step 2

Using the same tool carefully unclip the 4 locks and separate the fuel module canister from the fuel pump assembly.



Step 3

Disconnect wiring harness from fuel pump and module lid.



Step 4

Locate and remove e-clips on the end of the module legs. *Take note of orientation of module lid as it will vary between vehicles. Remove lid assembly.



Step 5

Locate and remove screws from manifold to fuel pump/filter base. There are 2 different length screws each with their respective spacer. Separate fuel pump and blank pump from manifold ensuring all o rings have been removed.



Assembly

For assembly of the KPM Fuel Systems 1000hp fuel pump module refer to the kit contents so that the correct components are fitted as per their number.

Step 1

Fit o rings (2) to manifold as shown.

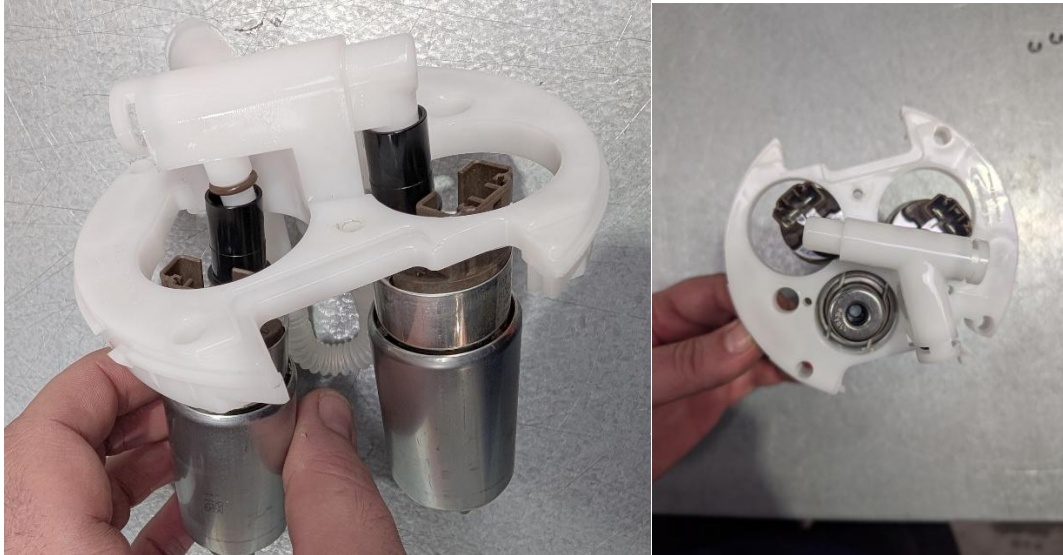


Step 2

*Optional. You can remove the static dissipation ring from on top of the fuel pressure regulator by removing the retaining clip and discarding the ring then re fit the retaining clip.

Step 3

Lubricate fuel pump to manifold o rings (2) and fit fuel pumps (1) by sliding up into place and applying slight pressure to lock the manifold to the fuel pumps. Then clock the fuel pumps clockwise as shown.



Step 4

Fit the fuel pump and filter base (3) to the fuel pumps lining up the 3 fastening points with the holes in the manifold.



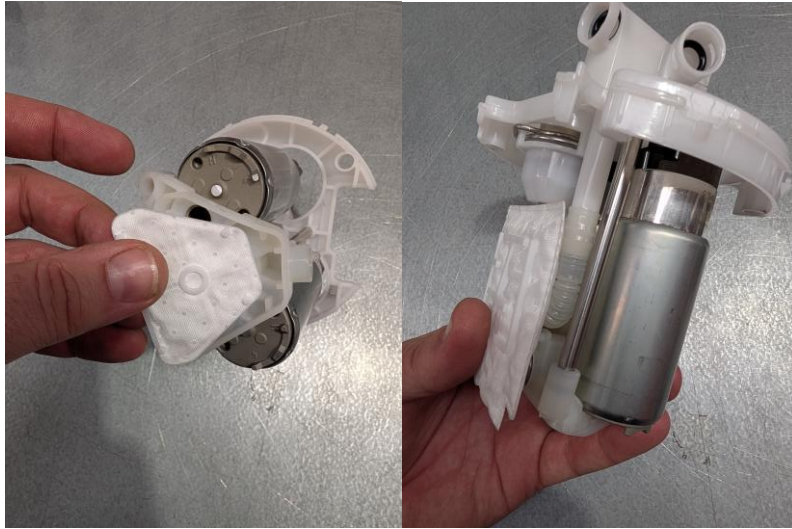
Step 5

Starting with the shorter screw and spacer tube line the fuel pump and filter base (3) up with the 3 holes on the manifold and insert the shorter screw into center hole and run into base (3), do not tighten yet. Fit the 2 longer screws and spacer tubes to the outer mounting holes in the manifold. Tighten screws ONLY after all screws are loosely fitted to base (3) first.



Step 6

Fit the flat triangle fuel filter (5) to the bottom of the fuel pump and filter base (3) it will clip in when pressure is applied. Fit the wide fuel filter (5) to the pressure regulator side of the fuel pump base. And lastly fit the taller fuel filter (5) to the remaining side. Ensure all inlets to fuel pumps are secure.



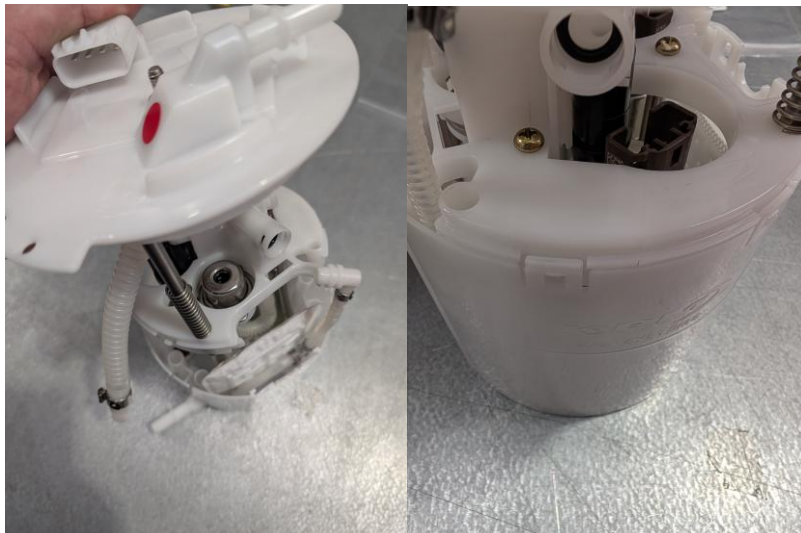
Step 7

Re install fuel module lid in the same orientation that it was originally ensuring springs are fitted between the lid and manifold. Slip e-clips onto legs and using small pliers gently lock the clips on.



Step 8

Slide Fuel pump assembly into the fuel pump canister in the original orientation ensuring locks are clipped in.



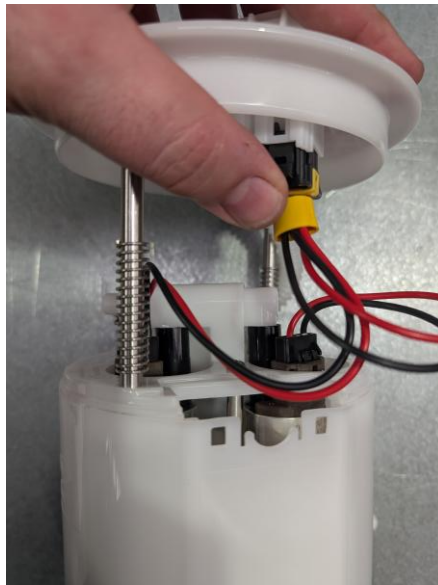
Step 9

Replace manifold outlet o rings (6) to the main feed AND the venturi outlet. Lubricate o rings and insert fittings. Install using new retaining clips (6).



Step 10

Attach wiring harness to fuel pumps and lid ensuring fuel pumps are securely connected (fuel pump wiring will vary).



Congratulations on fitting your 8-15 Add on kit.

For fitting the rest of your kit to your vehicle select the appropriate instructions below.

<https://kpmfuelsystems.com.au/technical/product-instructions/>